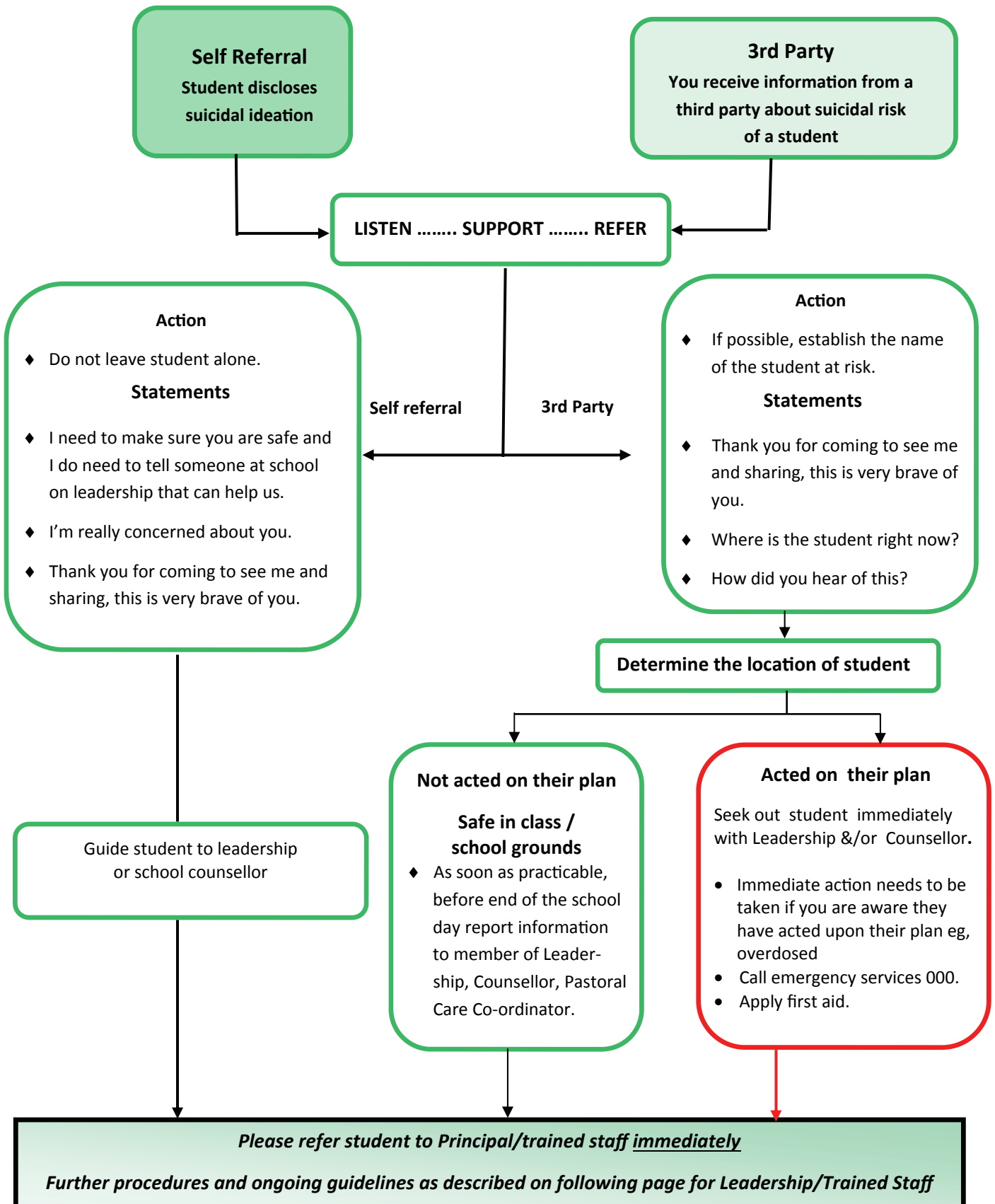


## Guide for General Staff Members responding to information about a suicidal student

*Students with suicidal ideation are to be taken very seriously.*



**Students with suicidal ideation are to be taken very seriously.**

Now that the student has been approached by a trained staff member ie, school counsellor or member from leadership, continue with the following guidelines.

ASK: Do you mean you have thoughts of suicide?  
and/or

ASK: Do you mean you are thinking of taking your own life?

No

Refer to Counsellor and  
Pastoral Care Coordinator  
or Leadership ASAP.

Yes

ASK: Have you tried to action these thoughts?

No

ASK: Is it likely that you will seriously  
harm yourself within the next 24 hours?

No

Yes

ASK: Do you currently hold the means to  
seriously harm yourself? eg. Pills (incl Panadol etc)  
knife/blade/scissors/needle, rope,  
chemicals (incl drugs).

**Remove item(s) & search bag & locker if necessary.  
(NB. Do this with a staff witness).**

No

Assess Immediate Danger:  
Do they need immediate medical attention?

Yes

Apply emergency 1<sup>st</sup> Aid as appropriate.  
Call Emergency Services (ES) if necessary.  
Stay with the student & get someone to  
locate the Principal/AP and Counsellor,  
if they are not already present.

**Ensure student is kept under  
observation until ES arrives.**

- ◆ Inform Principal and Counsellor immediately and directly. **Do not** leave a voicemail or email/text message. If Counsellor unavailable then ring Principal or delegate to call Mental Health Line immediately on **1800 011 511** so that a Mental Health clinician can assess current level of risk and make recommendations. (NB: caller to make notes on the call and the recommendations).
- ◆ Once Mental Health clinician or Counsellor consulted it maybe deemed appropriate that the Principal or delegate then informs parent /carer/guardian.
- ◆ Refer to the MRG (Mandatory Reporting Guidelines).
- ◆ Consider referral to Counselling Service.
- ◆ Consider reporting to CSO Child Protection Team.
- ◆ Based on recommendations, a decision is made on whether or not a school based case management team is formed to develop Risk Assessment and Management Plan.